

FOR LEASE

# DFW NORTH II

LAKESIDE PARKWAY, FLOWER MOUND, TEXAS 75028



## BUILDING 2

- Total Building SF: 185,000
- Available Building SF: 39,000-185,000
- Configuration: Rear load
- 32' Clear Height
- T-5 warehouse lighting
- Building Depth: 250'
- Typical bay: 52' x 47'
- Staging Bay: 60' deep
- 138 car parks
- 21 trailer parks
- 130' truck court
- (46) 9' x 10' dock doors
- (2) 12' x 14' overhead doors
- ESFR sprinkler system

## BUILDING 3

- Total Building SF: 164,580
- Available Building SF: 82,290-164,580
- Configuration: Cross dock
- 32' Clear Height
- T-5 warehouse lighting
- Building Depth: 422'
- Typical bay: 52' x 50'
- Staging Bay: 60' deep
- 139 car parks
- 66 trailer parks (possible)
- 130' truck court
- (35) 9' x 10' dock doors
- (2) 12' x 14' overhead doors
- ESFR sprinkler system
- The building could be secured



## FOR INFORMATION CONTACT

JOHN FULTON SIOR  
972.774.2518  
john.fulton@transwestern.com

BRETT OWENS SIOR  
972.774.2568  
brett.owens@transwestern.com

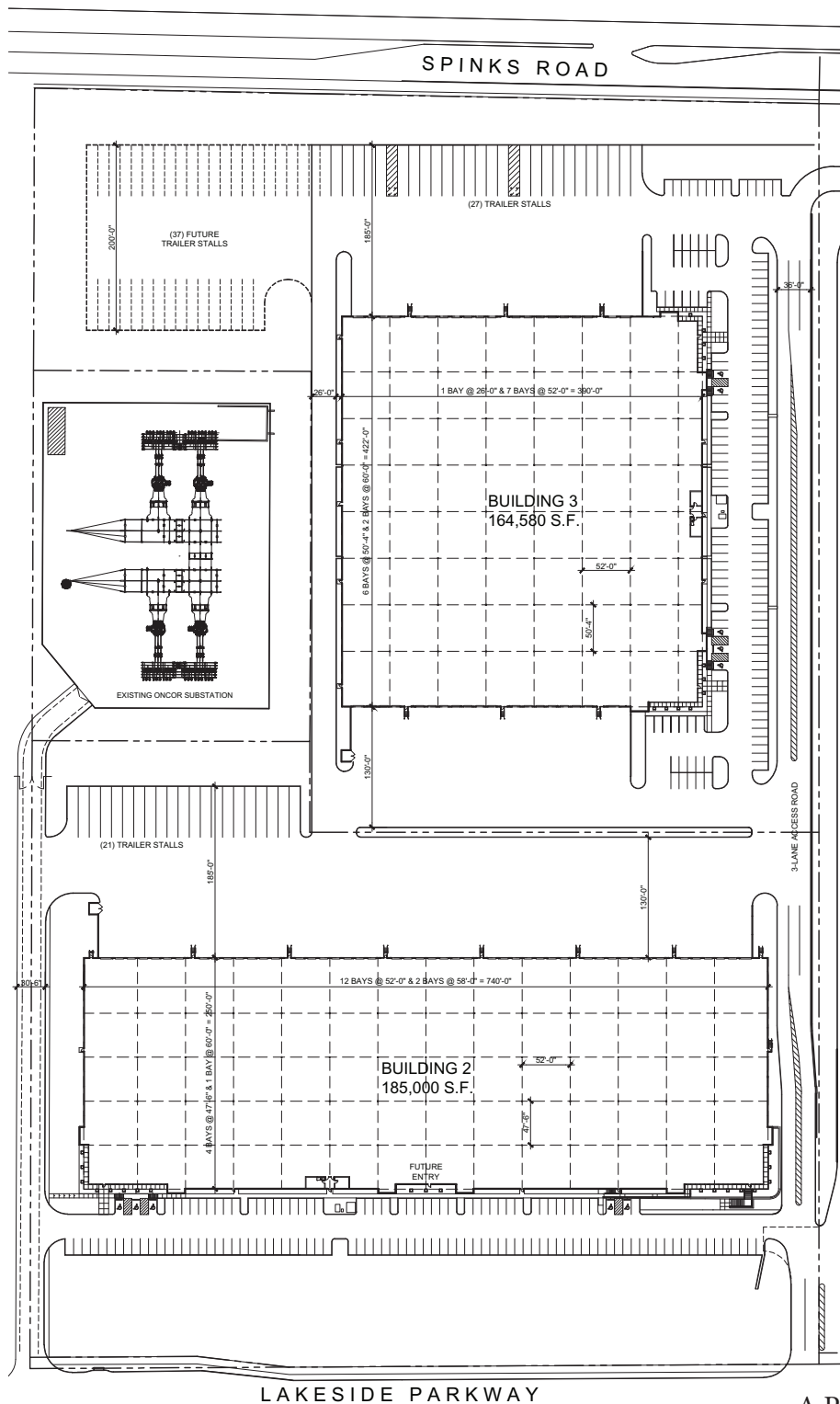
A Project of:

HUNTINGTON<sup>®</sup>  
INDUSTRIAL PARTNERS I

 **TRANSWESTERN<sup>®</sup>**

# DFW NORTH II

LAKESIDE PARKWAY, FLOWER MOUND, TEXAS 75028



## FOR INFORMATION CONTACT

JOHN FULTON SIOR  
972.774.2518  
john.fulton@transwestern.com

BRETT OWENS SIOR  
972.774.2568  
brett.owens@transwestern.com

A Project of:  
**HUNTINGTON**  
INDUSTRIAL PARTNERS



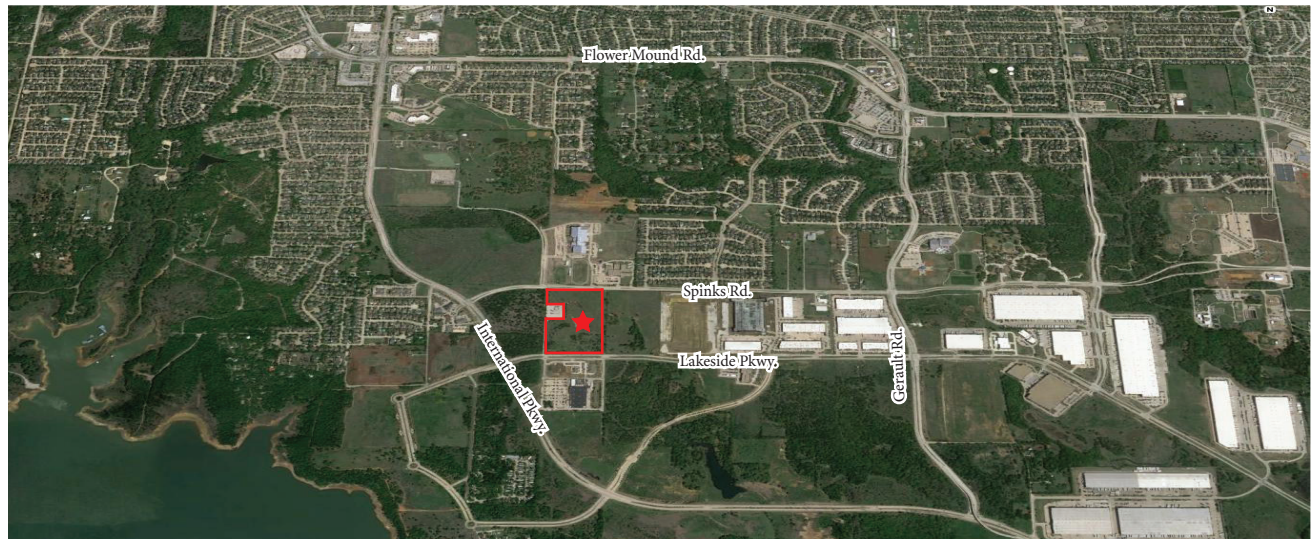
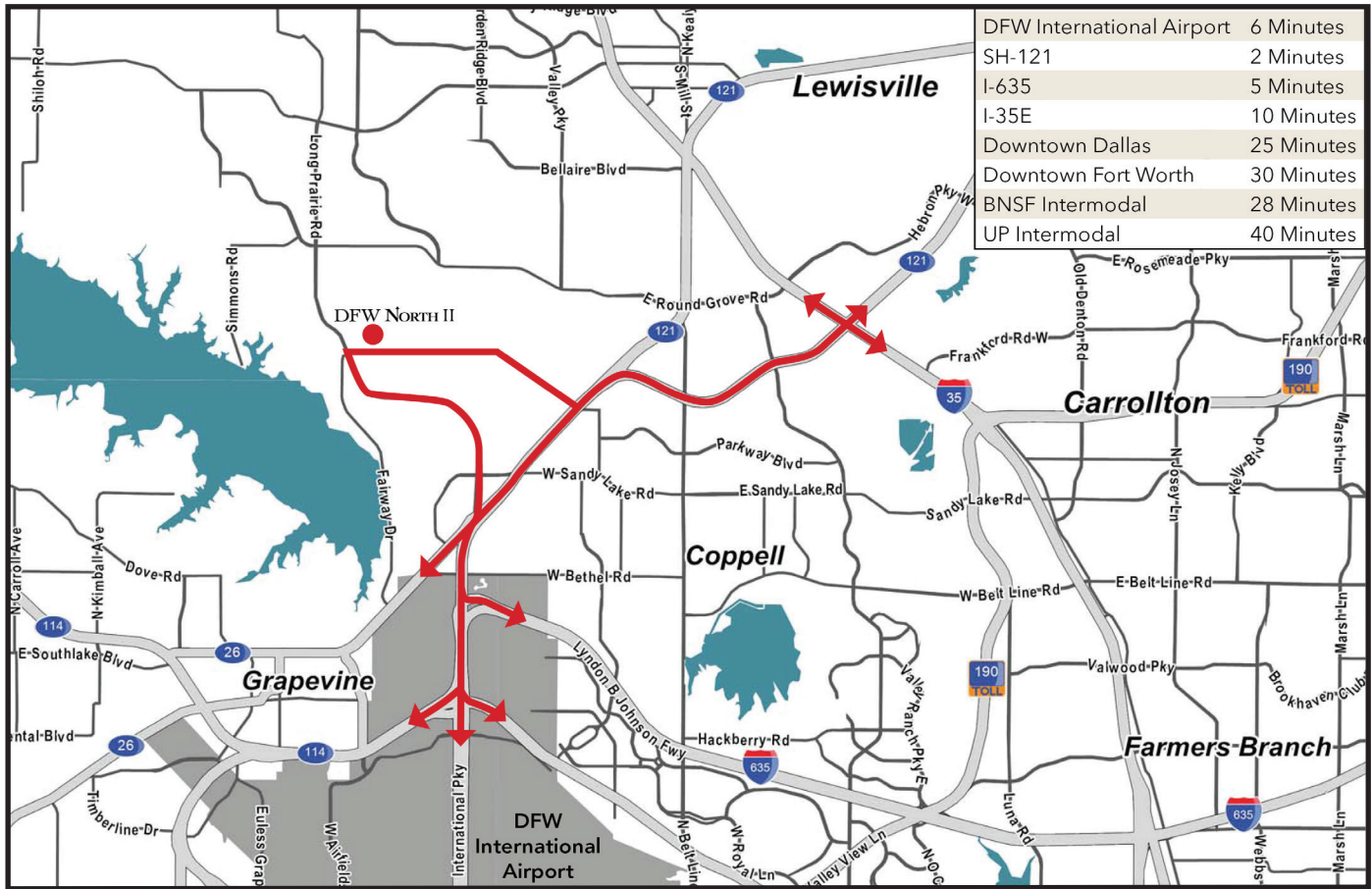


# DFW NORTH II

LAKESIDE PARKWAY, FLOWER MOUND, TEXAS 75028

## DRIVE TIMES

DFW International Airport	6 Minutes
SH-121	2 Minutes
I-635	5 Minutes
I-35E	10 Minutes
Downtown Dallas	25 Minutes
Downtown Fort Worth	30 Minutes
BNSF Intermodal	28 Minutes
UP Intermodal	40 Minutes



## FOR INFORMATION CONTACT

JOHN FULTON SIOR  
 972.774.2518  
 john.fulton@transwestern.com

BRETT OWENS SIOR  
 972.774.2568  
 brett.owens@transwestern.com

A Project of:  
**HUNTINGTON**  
 INDUSTRIAL PARTNERS

